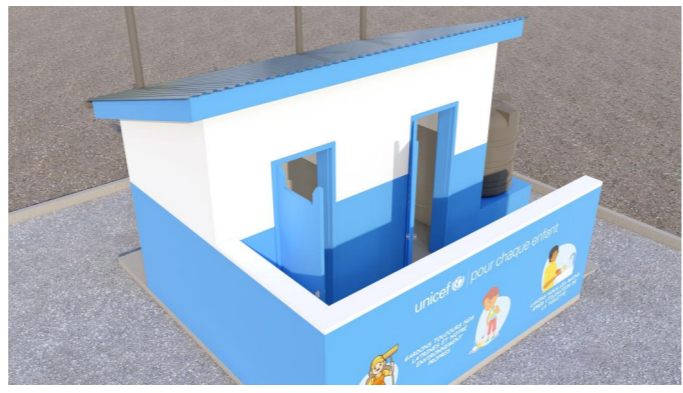
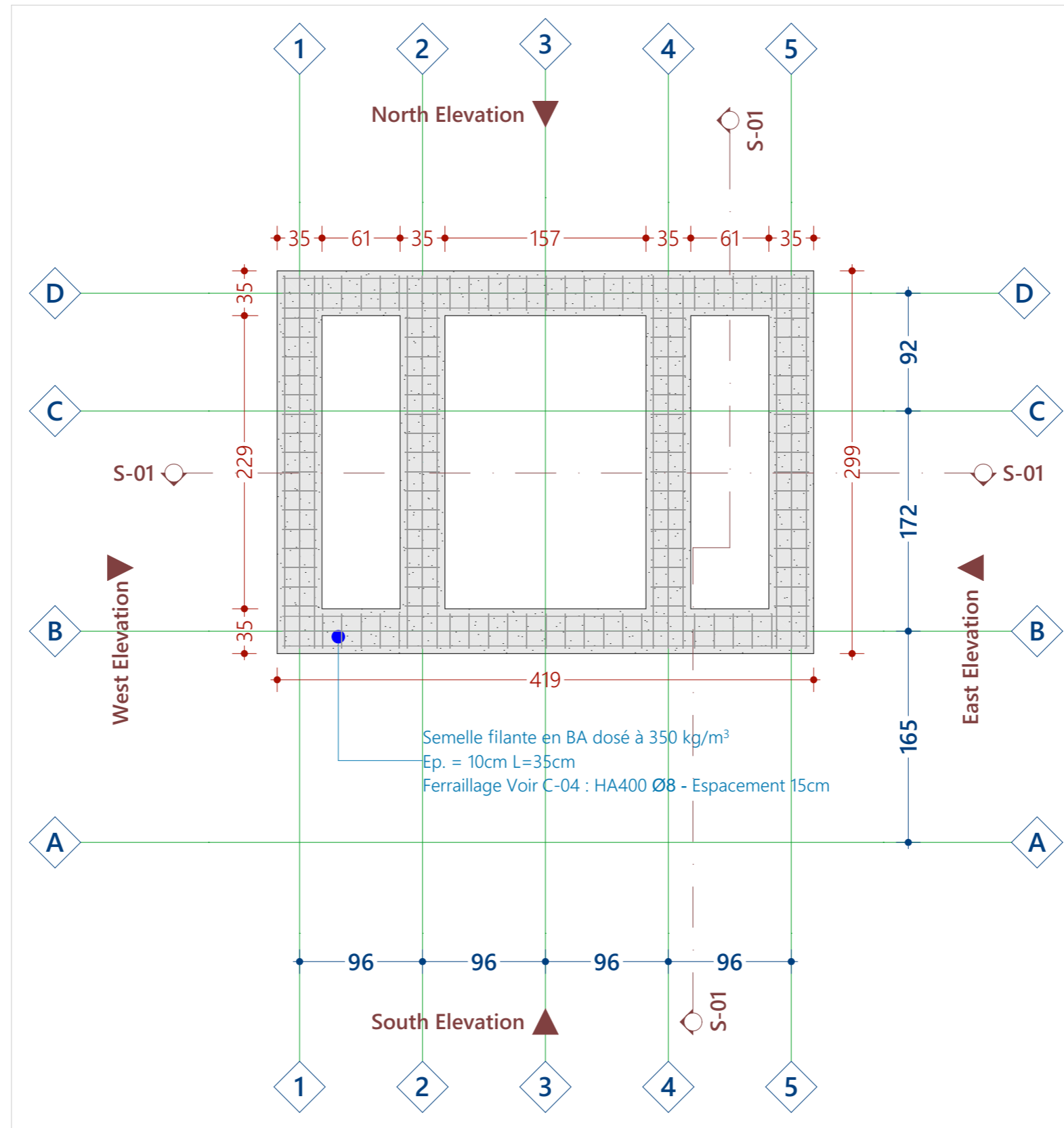




 | for every child
**BLOC SANITAIRE DE
 2 PORTES DE LATRINE**

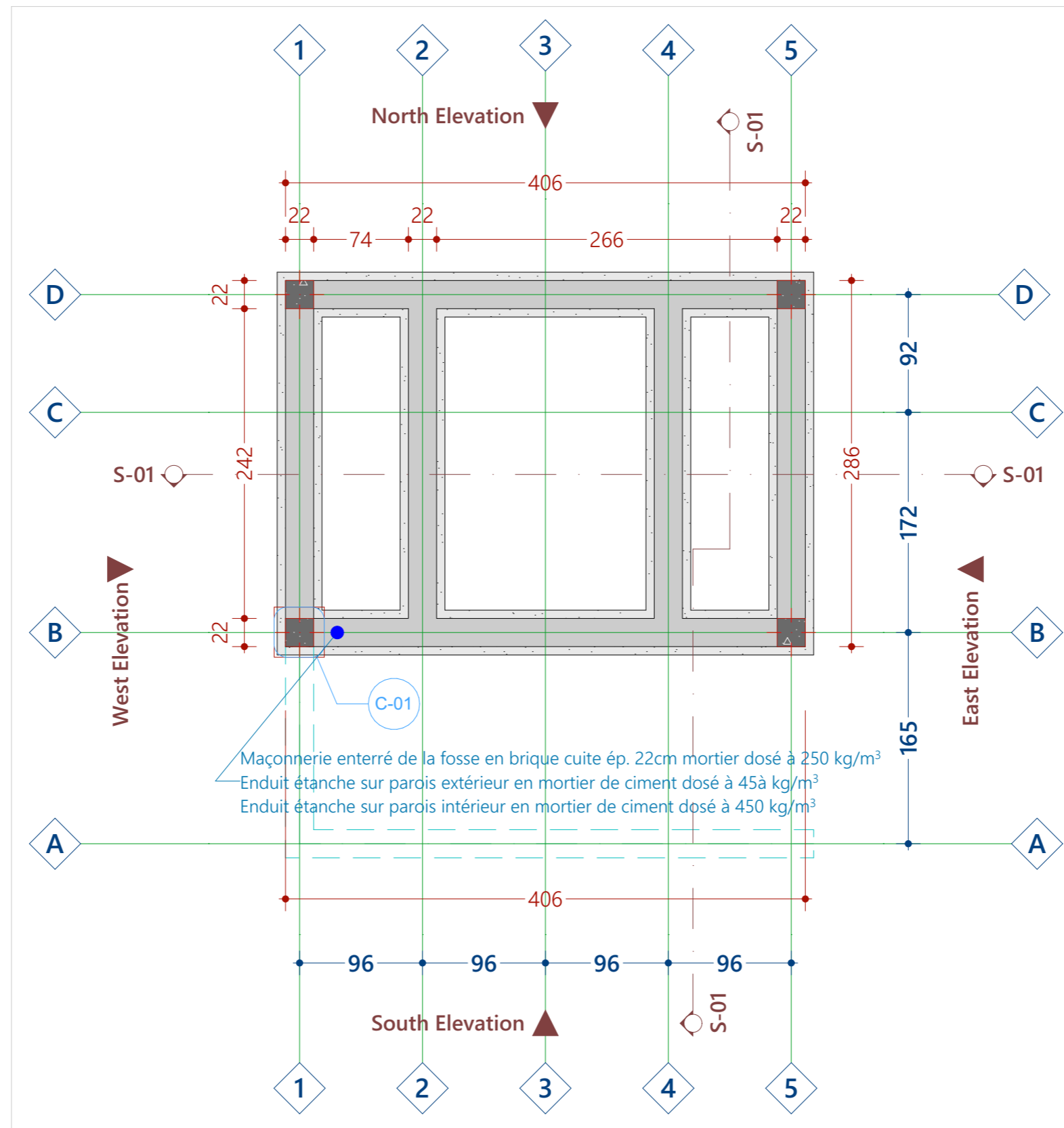




-3.

Fondation de la fosse

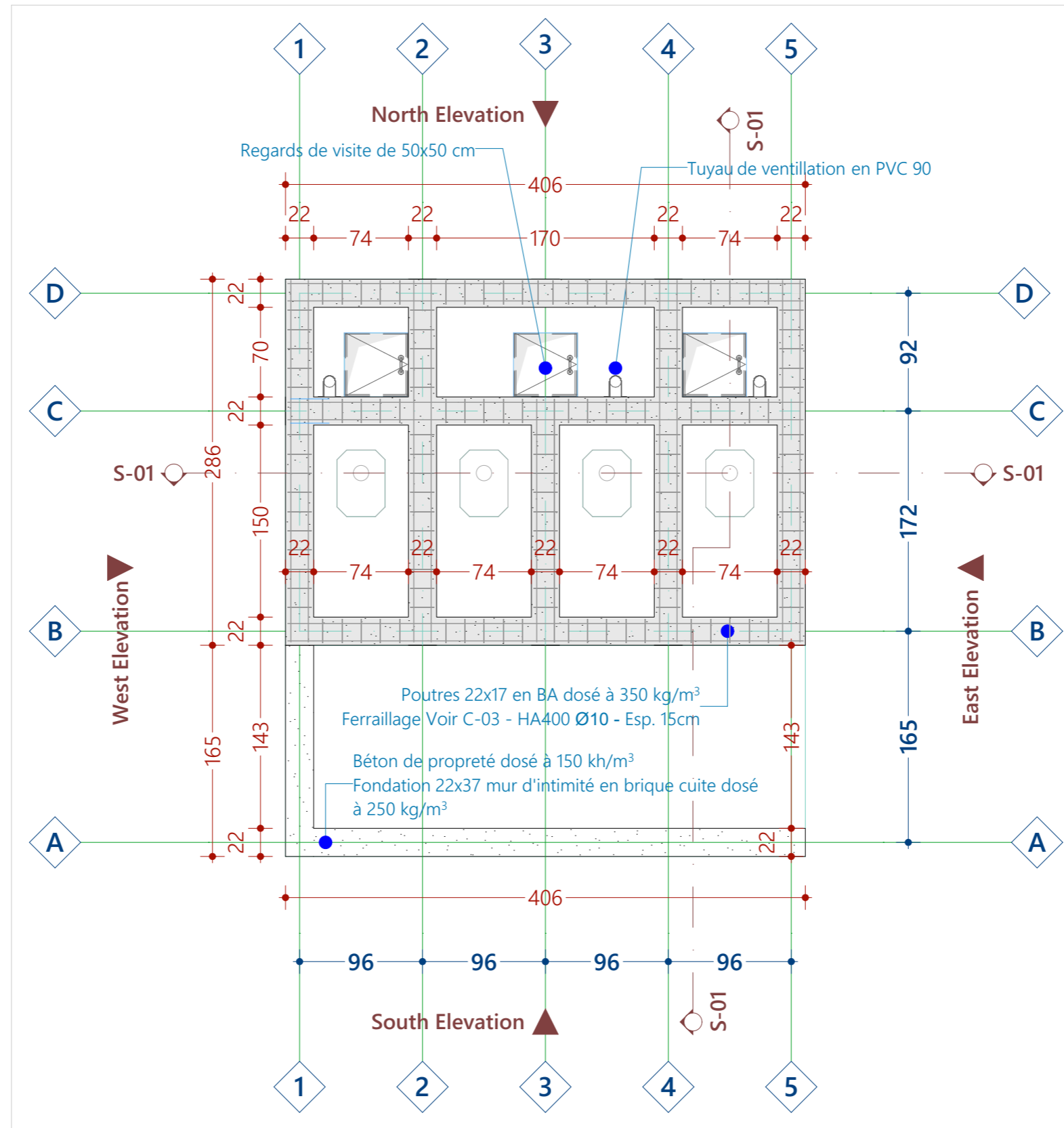
1:40



-2.

Maçonnerie de la fosse

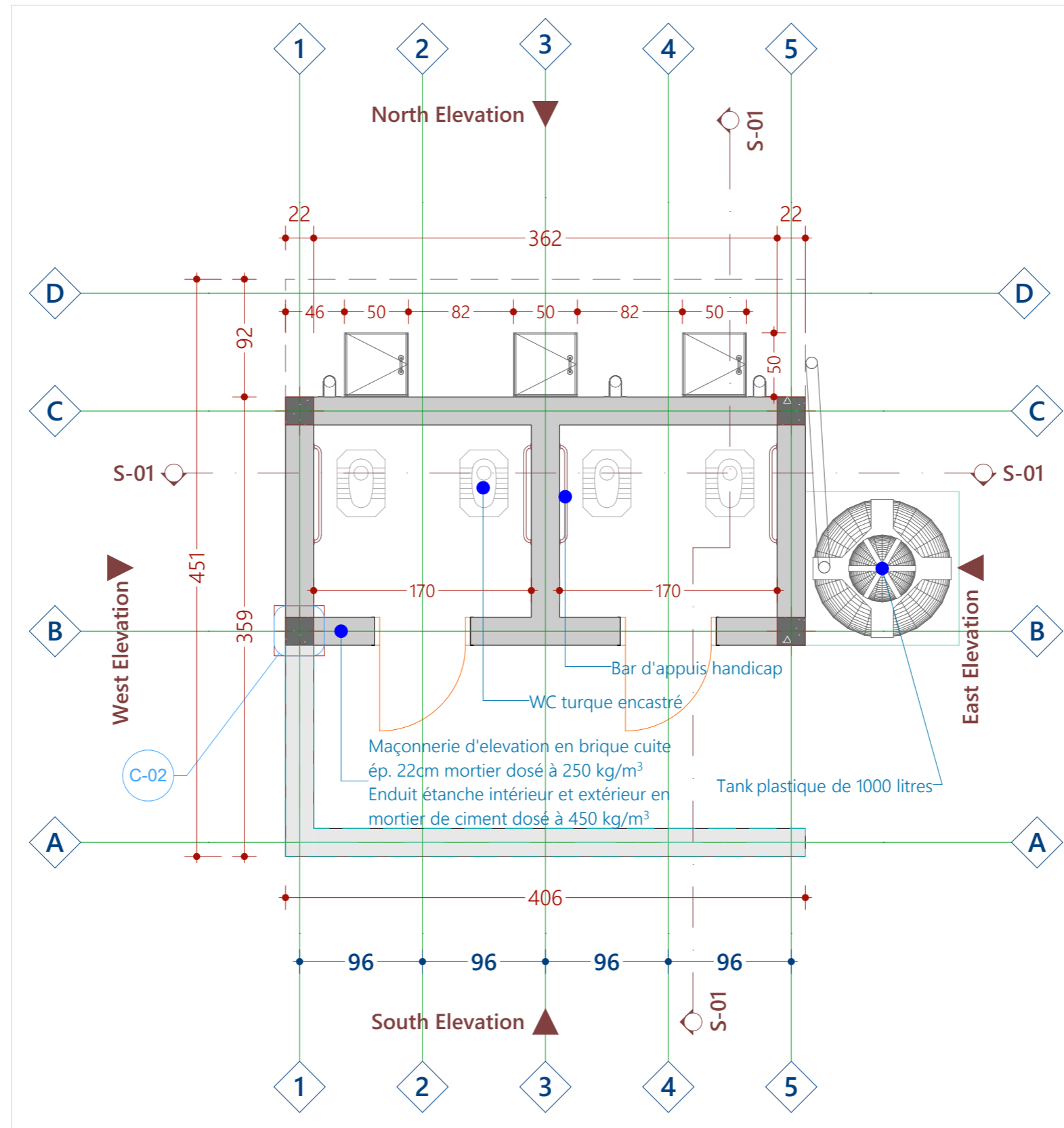
1:40



-1.

Poutre fosse et Fondation superstructure

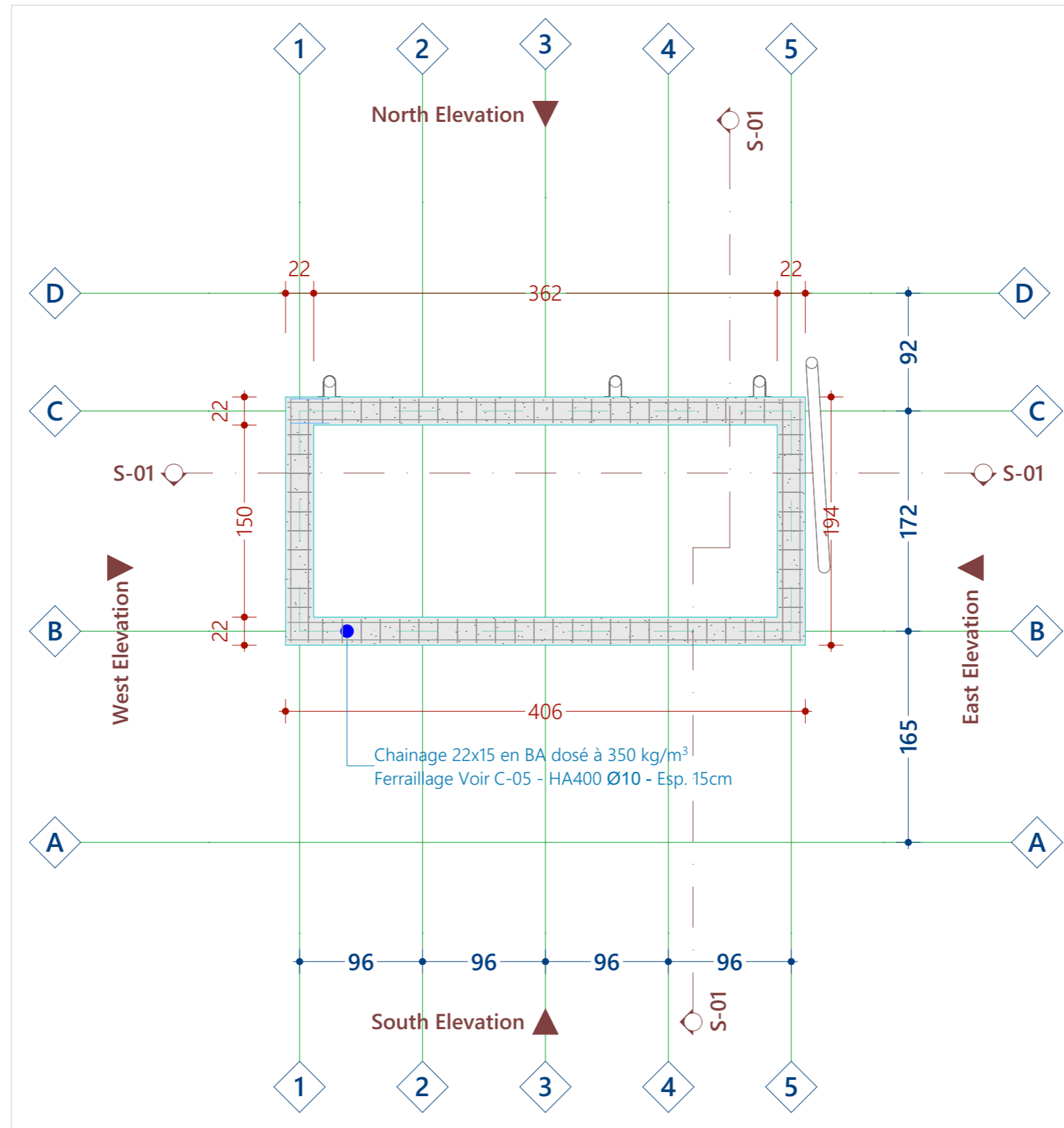
1:40



0.

Elevation superstructure

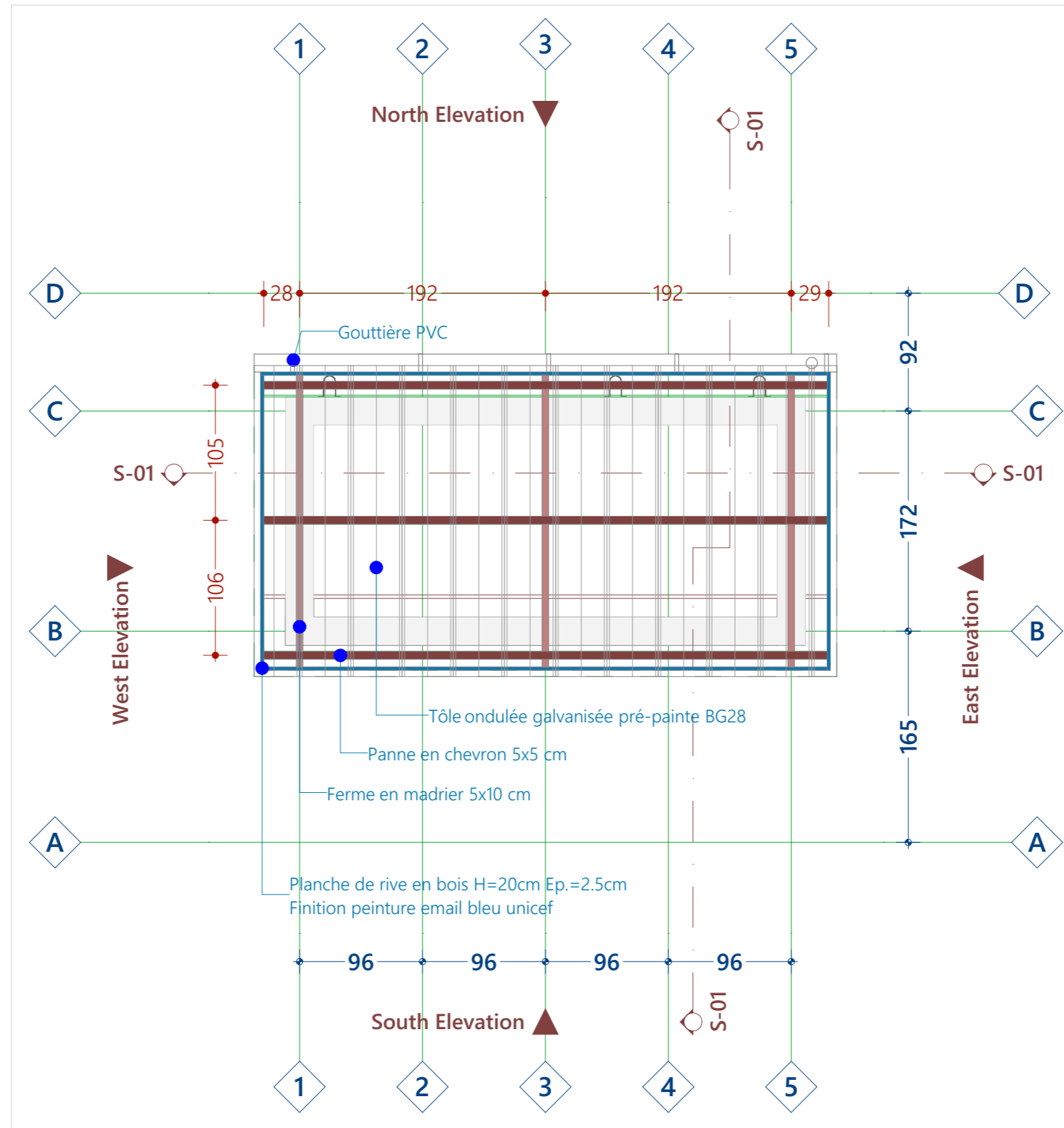
1:40



1.

Poutre superstructure

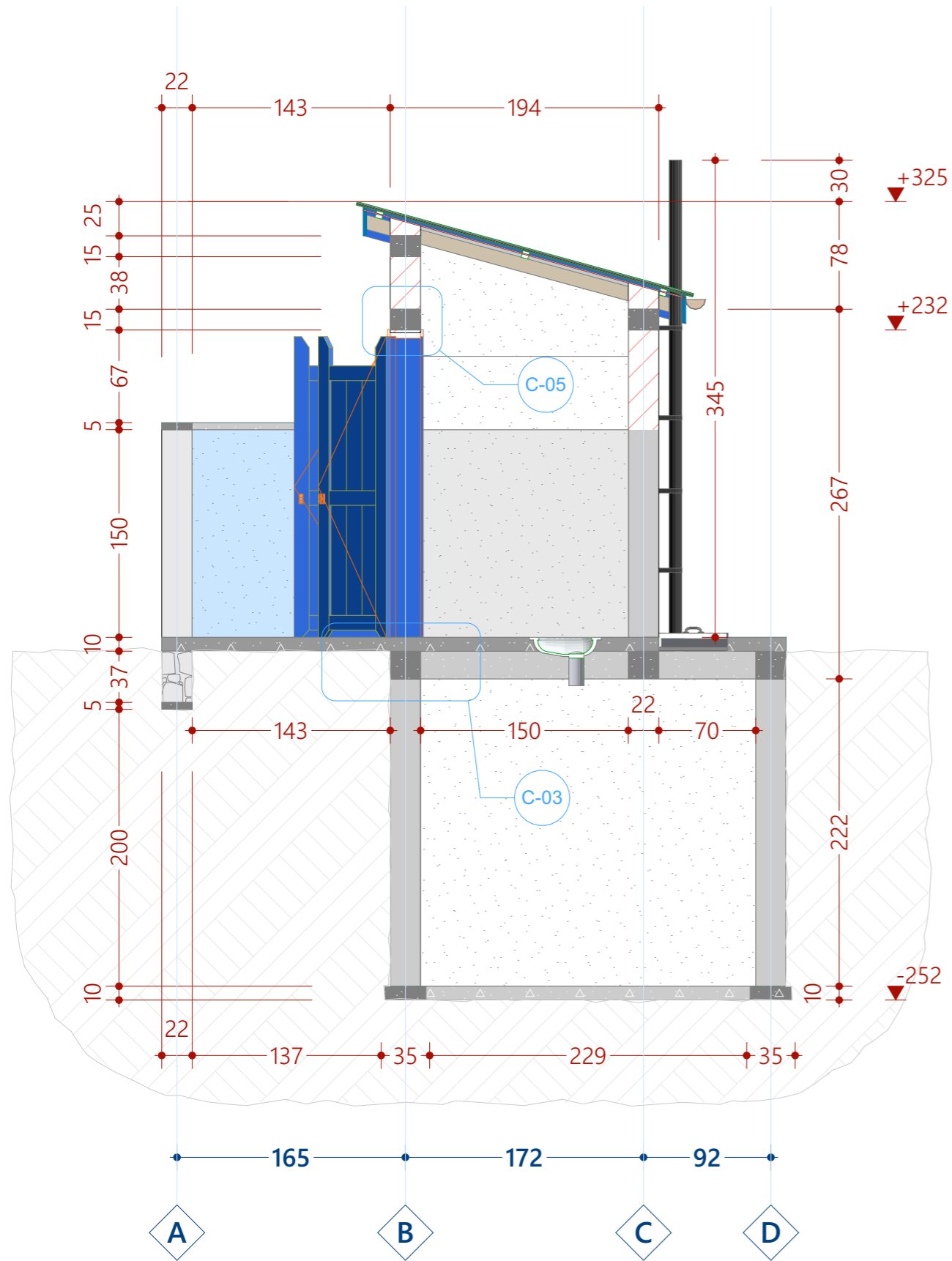
1:40



2.

Charpente et toiture

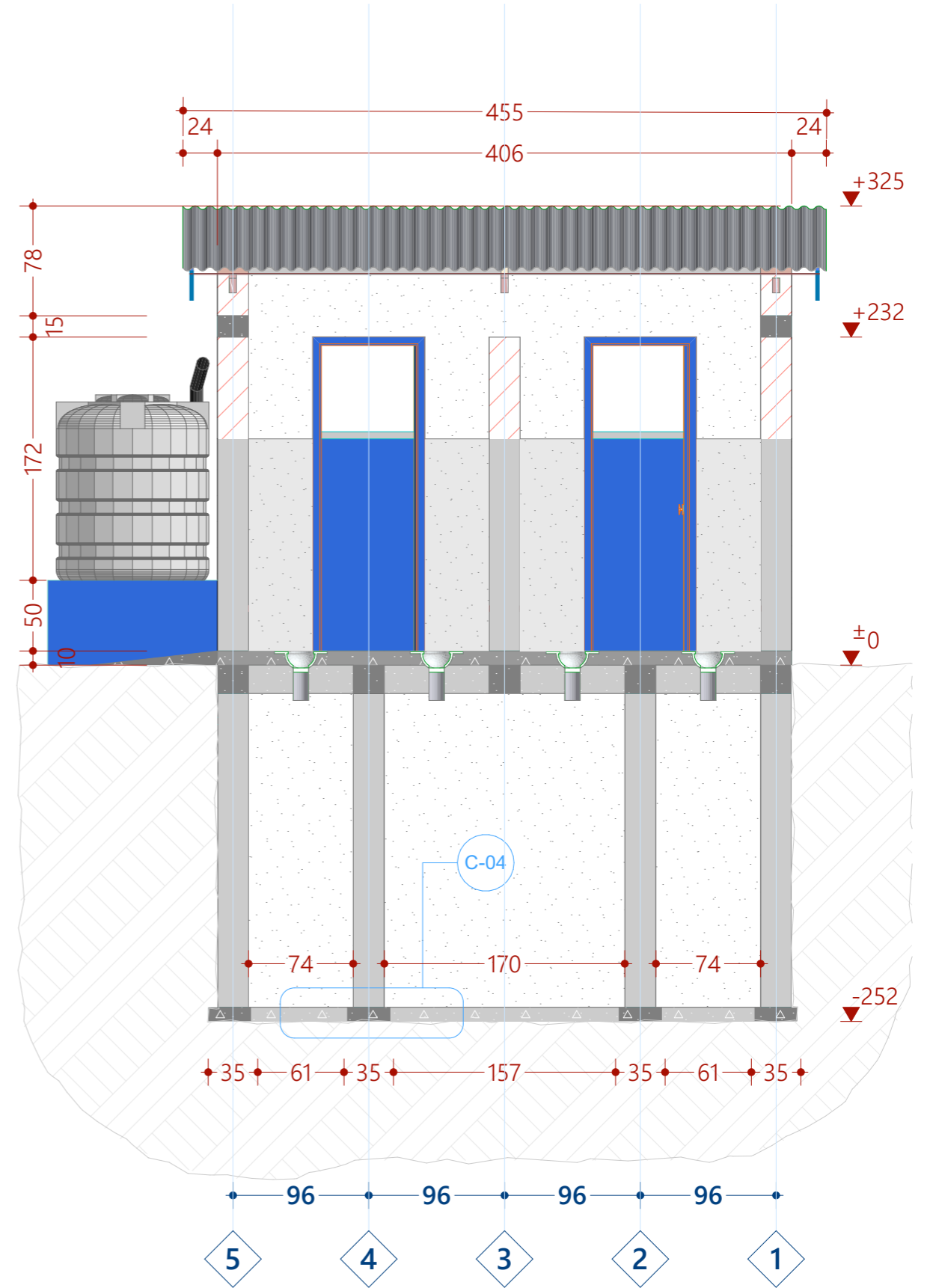
1:40



S-01

Building Section

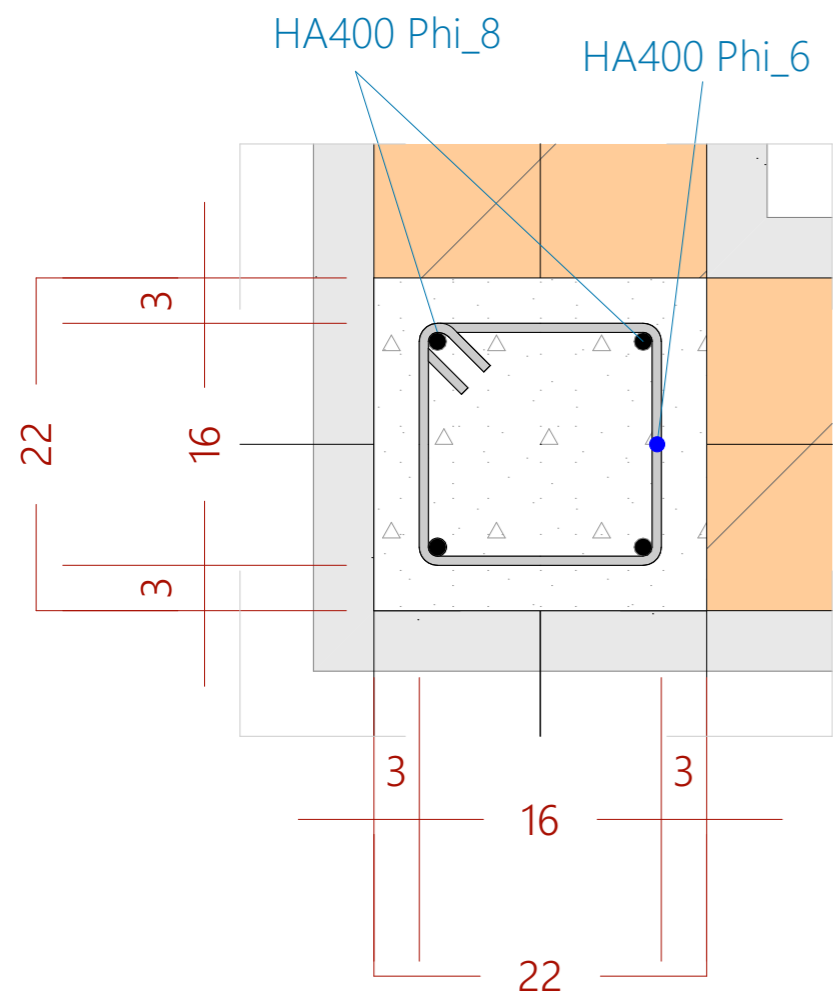
1:40



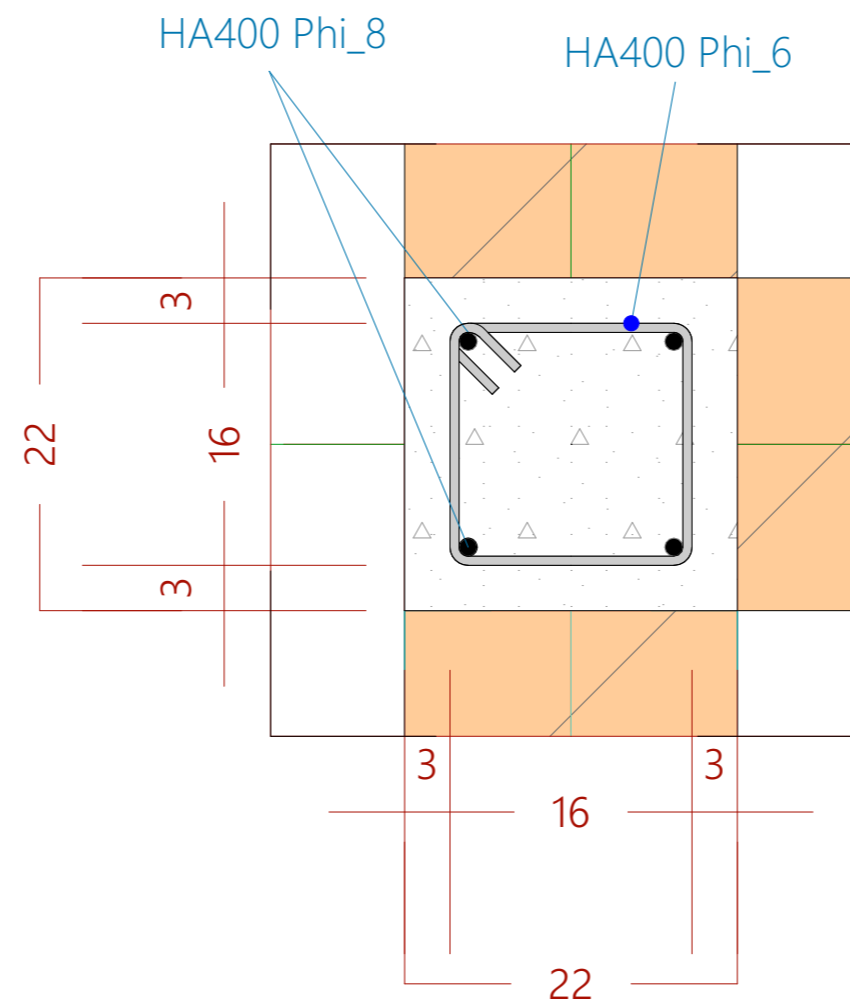
S-01

Building Section

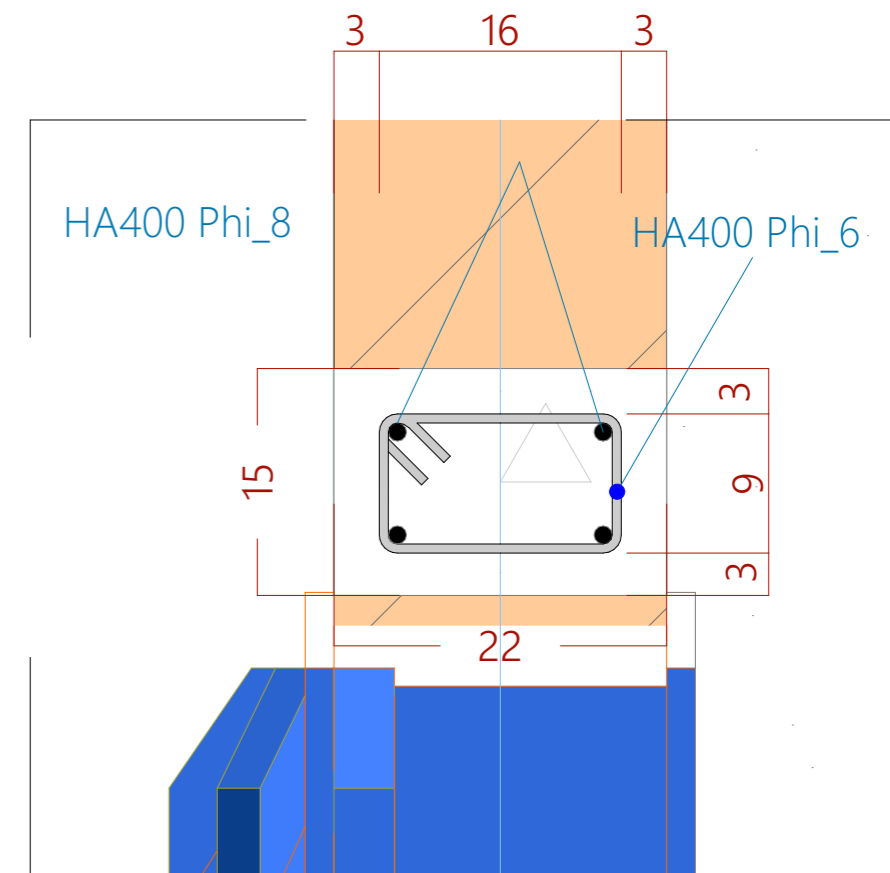
1:40



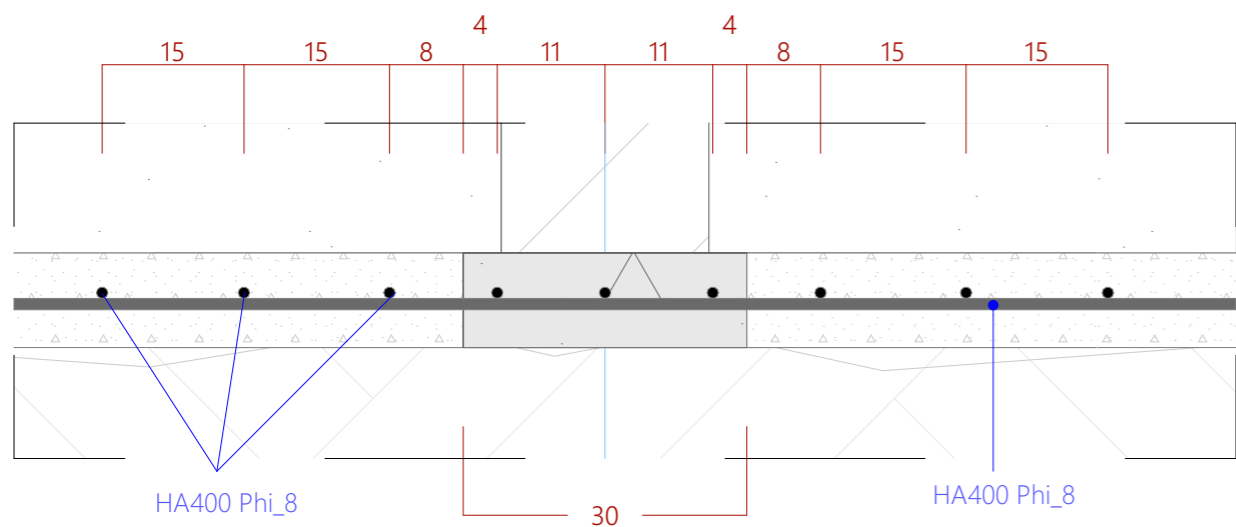
C-01 Colonne Fosse 1:5



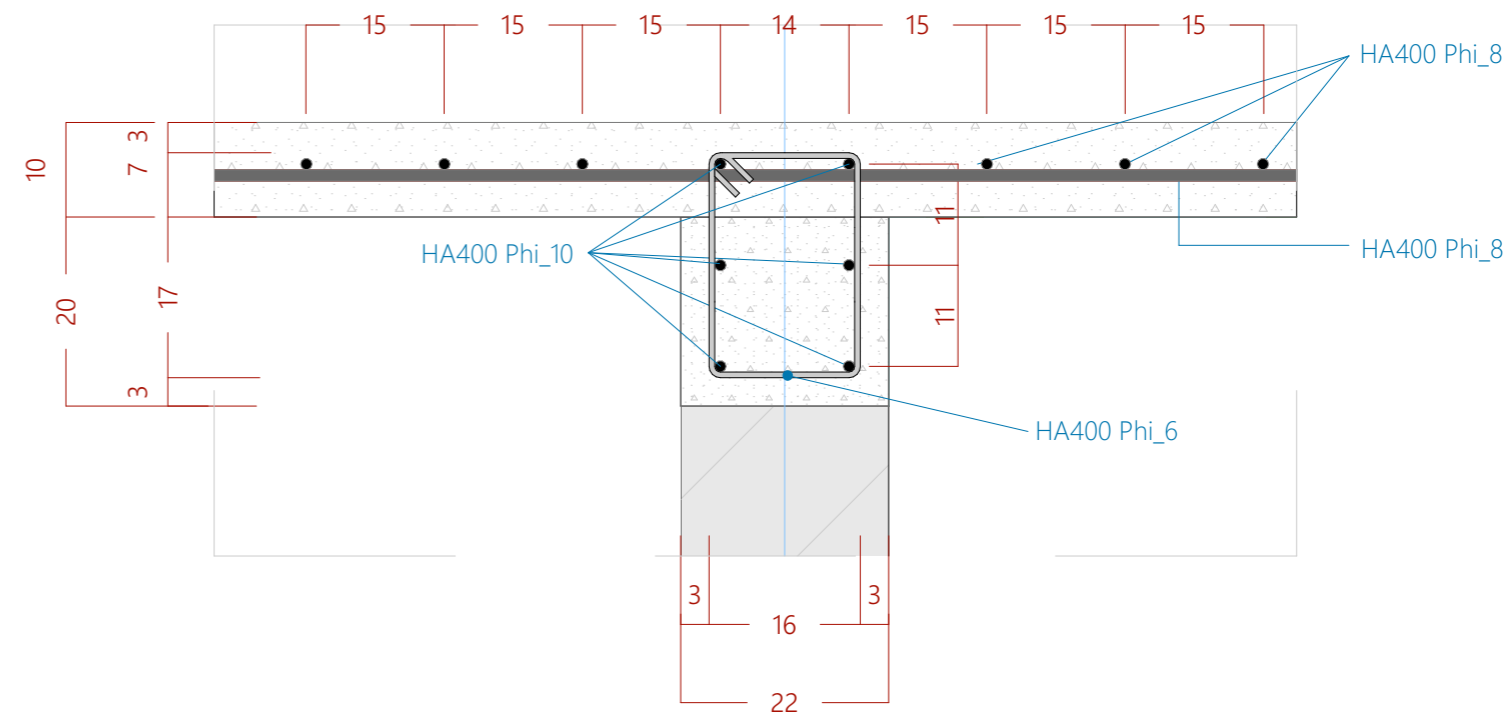
C-02 Colonne Superstructure 1:5



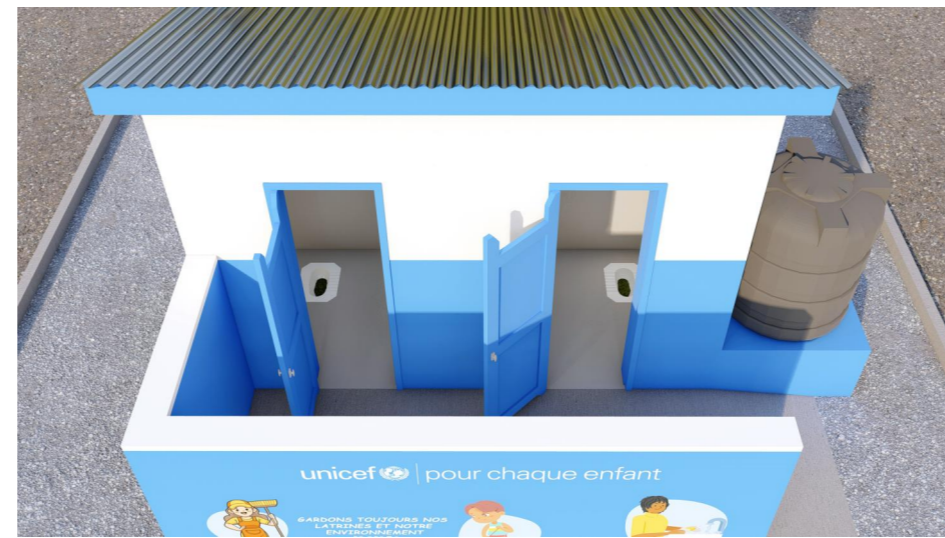
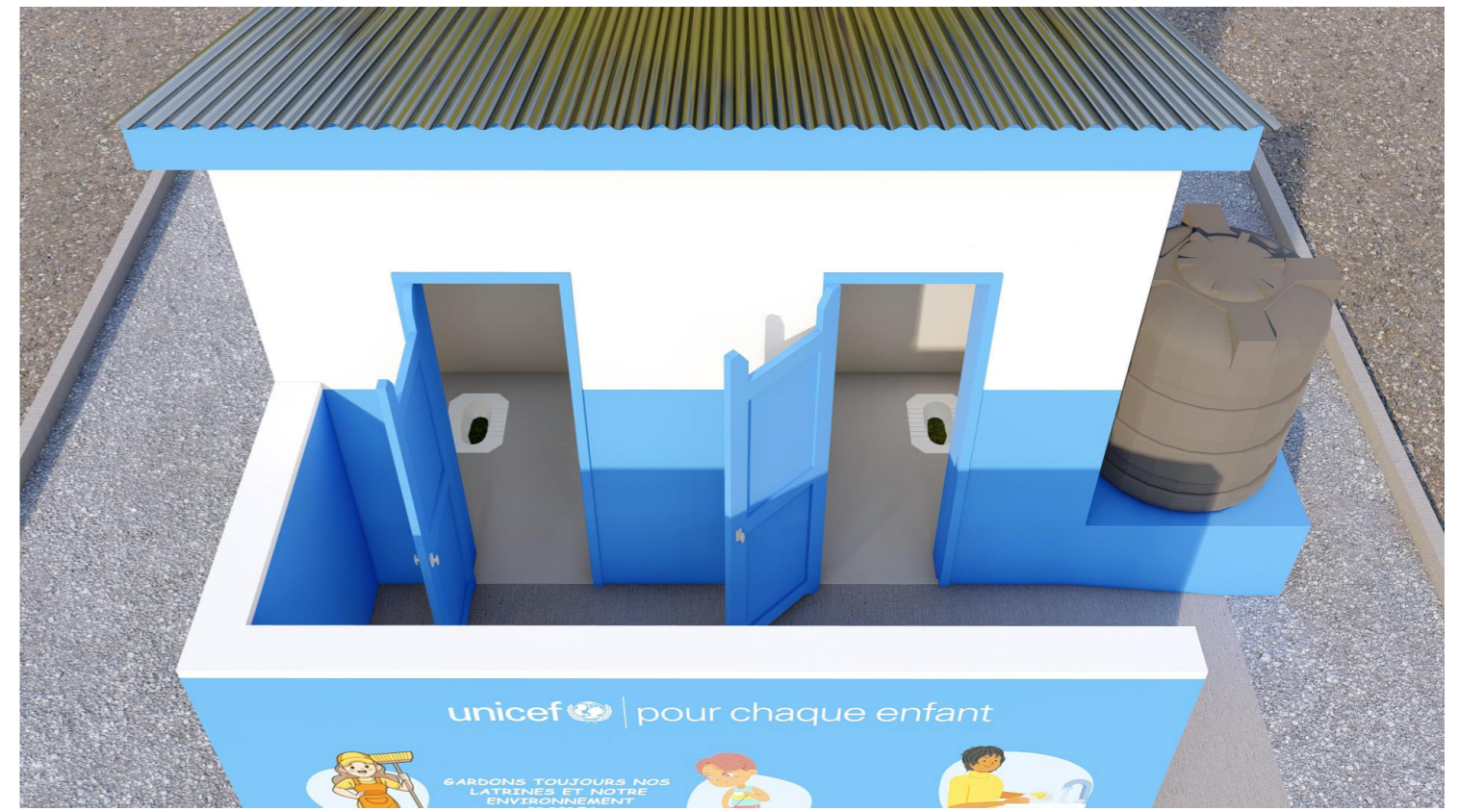
C-05 Fondation Fosse - Semelle filante 1:5



C-04 Fondation Fosse - Semelle filante 1:8



C-03 Poutre et dalle de la Fosse 1:8



unicef | for every child

PLAN ARCHITECTURAL BLOC SANITAIRE
2 PORTES DE LATRINE

VUES 3D

Mars 2024

Version 2.5

Dessin : Musese Guylain

NOTES

